



Wild *Brazil* **Expedition**

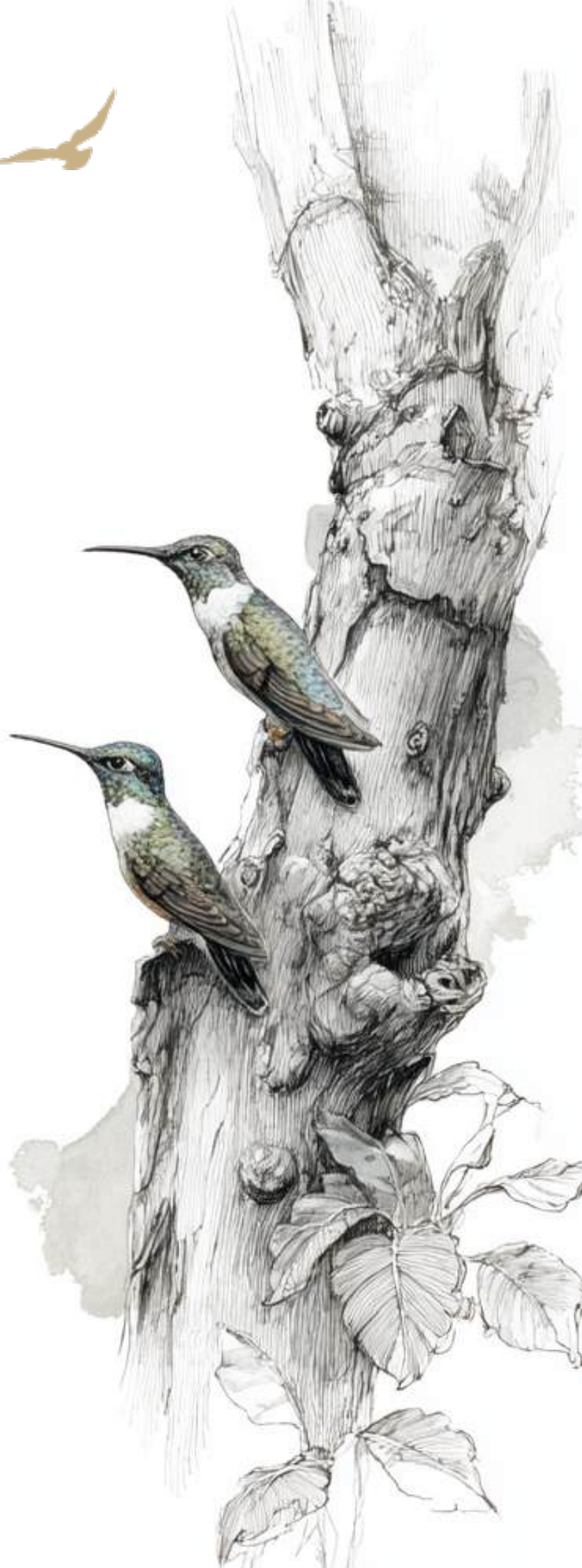
Atlantic Forest & Pantanal Safari Adventure

11-DAYS WILDLIFE SAFARI EXPEDITION





Experience Brazil's two greatest wildlife treasures in one unforgettable journey—the mystical Atlantic Forest and the vast wetlands of the Pantanal. Wander through lush rainforests alive with colorful birds, primates, and orchids, before venturing into the open floodplains where jaguars, giant otters, and caimans reign. This itinerary blends guided safaris, photography opportunities, and immersive nature walks, offering close encounters with South America's most iconic species. Perfect for wildlife enthusiasts, photographers, and adventurers, this trip reveals Brazil's biodiversity at its most raw and spectacular.



• ITINERARY •

Day 1 – Arrival in São Paulo & Transfer to the Atlantic Forest

Arrive in São Paulo and meet your guide for a scenic drive into the Atlantic Forest. On arrival at Trilha dos Tucanos Lodge, settle in and begin your first guided birdwatching and photography session, depending on arrival time. The forest comes alive with toucans, tanagers, hummingbirds, and a remarkable diversity of endemic species.

Overnight: Trilha dos Tucanos Lodge



• ITINERARY •

Day 2 – Full Day Birding at Trilha dos Tucanos

Spend the entire day immersed in the Atlantic Forest. Guided sessions take place along forest trails, feeding stations, and photography hides, allowing for close observation of both common and rare bird species. The slow pace and controlled setting make this an ideal environment for learning behaviour, light, and composition.

Overnight: Trilha dos Tucanos Lodge



• ITINERARY •

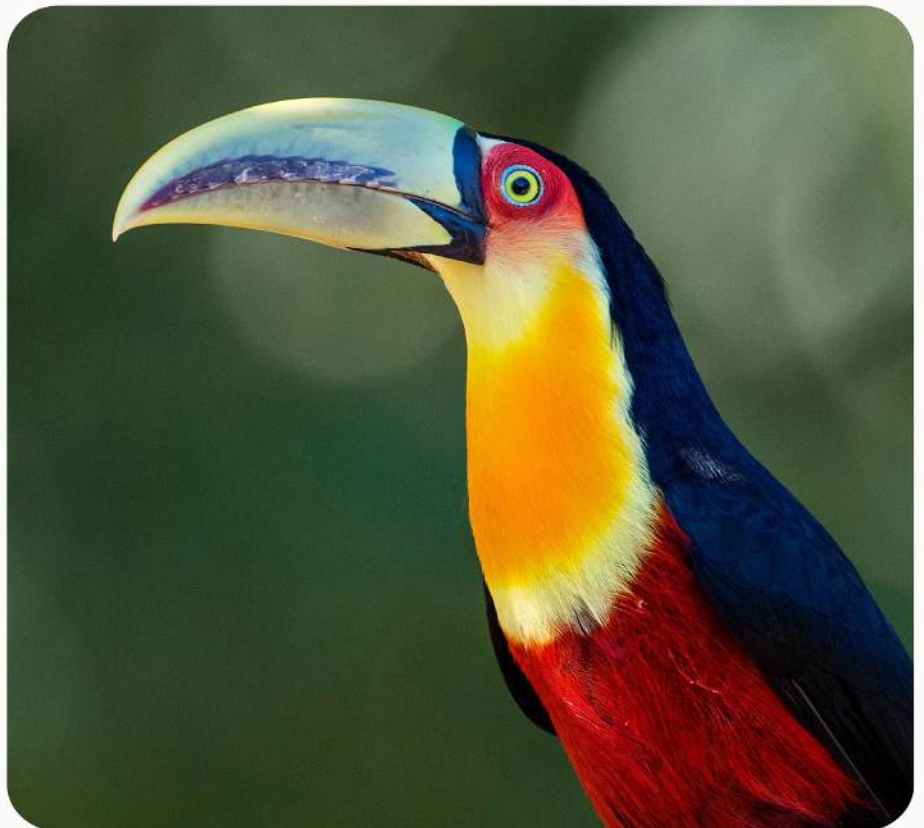
Day 3 – Morning Birding & Flight to Cuiabá

Enjoy a final morning birding session before returning to São Paulo. Later, board a short domestic flight to Cuiabá, the gateway to the Pantanal. On arrival, transfer to a hotel near the airport for a comfortable overnight stop before entering the wetlands.

Overnight: Amazon Airport Hotel, Cuiabá



GALLERY



• ITINERARY •

Day 4 – Into the Pantanal: Cuiabá to Pousada Piuval

After breakfast, drive south into the Pantanal, transitioning from city landscapes to open savannahs and wetlands. Check in at Pousada Piuval, a vast private reserve. In the afternoon, take a guided nature walk, followed by a night safari searching for nocturnal wildlife such as foxes, tapirs, and owls.

Overnight: Pousada Piuval



• ITINERARY •

Days 5–10 – Piuval → Panorâmico Transpantanal (Porto Jofre)

Begin Day 5 with an early morning safari at Piuval before continuing along the Transpantaneira road to Porto Jofre. Board the Panorâmico Transpantanal, your premium floating hotel for an extended river-based wildlife experience. Over the next several days, enjoy multiple morning and afternoon boat safaris along the rivers of the northern Pantanal—one of the best places in the world to observe wild jaguars. Safaris focus on riverbanks and oxbow lakes where jaguars, giant river otters, capybaras, caimans, and rich birdlife are frequently encountered. Safari schedules remain flexible, adapting to wildlife movement, weather, and light conditions to maximise ethical sightings and photographic opportunities. Overnight: Panorâmico Transpantanal (5 nights)



GALLERY



• ITINERARY •

Days 10–11 – Panorâmico to Cuiabá

After a final morning boat safari, disembark and drive back to Cuiabá through the Pantanal landscape. The route often offers additional wildlife sightings en route. Check in once again at the airport hotel for rest and preparation for onward travel.

Overnight: Amazon Airport Hotel, Cuiabá



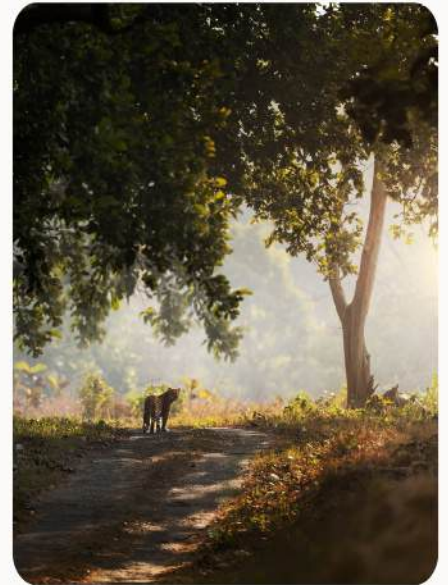
• ITINERARY •

Day 11 – Cuiabá to São Paulo

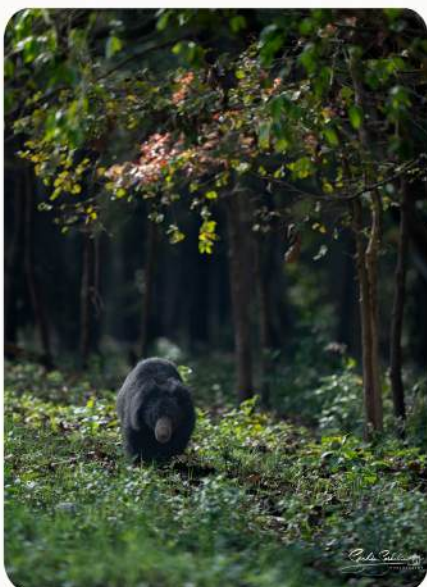
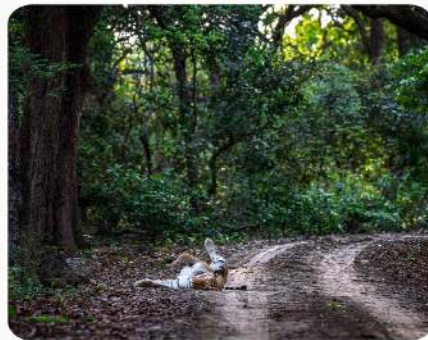
After breakfast, transfer to the airport and fly back to São Paulo.



GALLERY



GALLERY



Trilha dos Tucanos Lodge – A Paradise for Tropical Birds

A small, family-run lodge, simple, welcoming, and entirely dedicated to bird photography and ornithological observation in the heart of the Atlantic Forest. Rooms are basic yet clean, offering everything you need for a comfortable stay. The food is homemade, delicious, and prepared with care. While there is no air conditioning, the cool nights during the visiting season make it unnecessary. Wi-Fi is available. Beyond its exceptional natural setting, it's the warmth and kindness of the owners that make this place truly unique and unforgettable for nature enthusiasts.



A Continuous Spectacle for Bird Photographers

The lodge is renowned for its outstanding feeding stations, where over 350 bird species come to feed, sometimes quite literally from the visitors' hands, creating rare and magical photographic opportunities.

On-site facilities include a variety of fruit feeders, dedicated hummingbird feeders, discreet forest hides for spotting shyer species, and 4 km of trails winding through lush vegetation and offering diverse environments: a lake, streams, a bridge, a forest house, and more. The lodge's gardens, rich with native fruit trees, attract a remarkable variety of local species, making every outing a fresh and rewarding experience for birdwatchers and photographers alike. This is a true sanctuary for the avian wildlife of the Atlantic Forest – combining authenticity, simplicity, and total immersion in nature.



• OUR STAY •

Pousada Piuval – Gateway to the Wild Pantanal

Pousada Piuval is an open door to one of the richest biodiversity sanctuaries on Earth, the Pantanal. Located on a working cattle ranch of over 7,000 hectares, it blends the rustic charm of a traditional fazenda with total immersion in Pantanal wildlife.

Here, nature is everywhere. At dawn, the calls of macaws and the flight of jabirus mark the start of the day. From raised walkways and observation towers, you can spot caimans, capybaras, and sometimes even the elusive jaguar or a giant anteater carrying its young on its back.

Sunsets set the flooded plains ablaze, turning each evening into a living painting.

Pousada Piuval has preserved the spirit of the Pantanal while offering all the comfort needed for a relaxing stay: simple yet welcoming air-conditioned rooms, each with a small balcony or hammock to enjoy nature's symphony. The atmosphere is warm and family-oriented, with a team, largely from the region, that passionately shares the pantaneiro way of life.



At the heart of the lodge, the beautiful infinity pool blends seamlessly into the surrounding landscape. From the water, the view stretches across the plains and buriti palms, framing spectacular sunsets often accompanied by the graceful flight of ibis or the distant calls of howler monkeys.

Daily activities include:

4x4 safaris to observe wildlife across different habitats.

Night or early-morning safaris to encounter creatures most active in the dark.

Guided walks through gallery forest, listening for the sounds of the wild and spotting monkeys and birds.

Meals are generous, homemade, and rooted in local flavors: grilled meats, fresh fish, seasonal vegetables, always served with the authenticity and conviviality that define Pantanal hospitality.



• OUR STAY •

Panorâmico Transpantanal, Porto Jofre – Floating Comfort in the Heart of the Wild Pantanal

Anchored along the wildlife-rich rivers of the Pantanal, the Panorâmico Transpantanal offers an exceptional stay designed for immersive, ethical wildlife exploration. Positioned in prime jaguar habitat near Porto Jofre, this premium floating hotel allows guests to live at the rhythm of the river – waking to misty waterways and ending days under vast Pantanal sunsets.

Spacious, air-conditioned cabins are thoughtfully designed for comfort without distancing guests from nature. Large panoramic windows frame uninterrupted views of the riverbanks, where capybaras, caimans, giant otters, and jaguars are often sighted directly from the deck.

Communal spaces include wide observation decks, shaded lounges, and open-air dining areas – ideal for reviewing sightings, sharing photographs, and quietly absorbing the surrounding wilderness.



Immersion, Guided by Ethics

Staying aboard the Panorâmico means beginning each day with expertly guided river safaris led by local naturalists and trackers. Daily excursions focus on ethical jaguar observation, birdlife, and riverine ecosystems, prioritising respectful distances and minimal disturbance. As with all Ethical Wildlife journeys, the experience balances access with responsibility – supporting local expertise, conservation-conscious operations, and slow, observation-led encounters rather than rushed sightings.

Comfort in Harmony with the Wild

The floating hotel operates with a low-impact philosophy, blending discreet luxury with environmental awareness. Attentive service, fresh regional cuisine, and relaxed pacing ensure guests can recover between safaris while remaining deeply connected to the landscape. Perfectly positioned for extended river exploration, the Panorâmico Transpantanal is not just a place to stay – it is an integral part of the Pantanal safari experience.

● INCLUSIONS & EXCLUSIONS ●

Inclusions

- Domestic Flights mentioned in the itinerary
- All accommodations
- All meals and water
- Wildlife expert english speaking and certified guide
- All safaris and activities included in the itinerary
- Certified boat Driver, jaguar spotter for the boat safaris
- Entrance fees for all parks and reserves
- 24/7 local assistance during your stay
- Wildlife Talks: Engaging sessions on animal behavior, ecology, and conservation to enrich your safari experience.
- Evening Talks: Relaxed sessions with biologists sharing insights on Brazil's wildlife, behavior, and conservation.
- Photography & Behavior Sessions: Expert naturalists share tips on species, behavior, and camera settings—helping you capture great shots while respecting wildlife.

Exclusions

- International flights to Brazil
- Personal travel insurance
- Personal expenses and tips for guides/drivers
- Activities not specified in the program

• WHO IS THIS FOR? •

If the call of the wild excites you, this expedition is for you. It's for nature lovers who feel alive in the stillness of rainforests and the vastness of wetlands. It's for photographers who want to frame jaguars by the riverbank, capture macaws in flight, and seek the quieter beauty of rare forest birds. It's for those who see travel as discovery, not just movement. In the Atlantic Forest and Pantanal, every day brings encounters that are untamed, unpredictable, and unforgettable – perfect for those who long to return with memories and images that truly matter.





CONTACT US



+91-8384090038, +91-9871775251



query@theethicalwildlife.com