



Red
Panda
Expedition
A Singhalila Wildlife Quest

6-DAY WILDLIFE SAFARI EXPEDITION



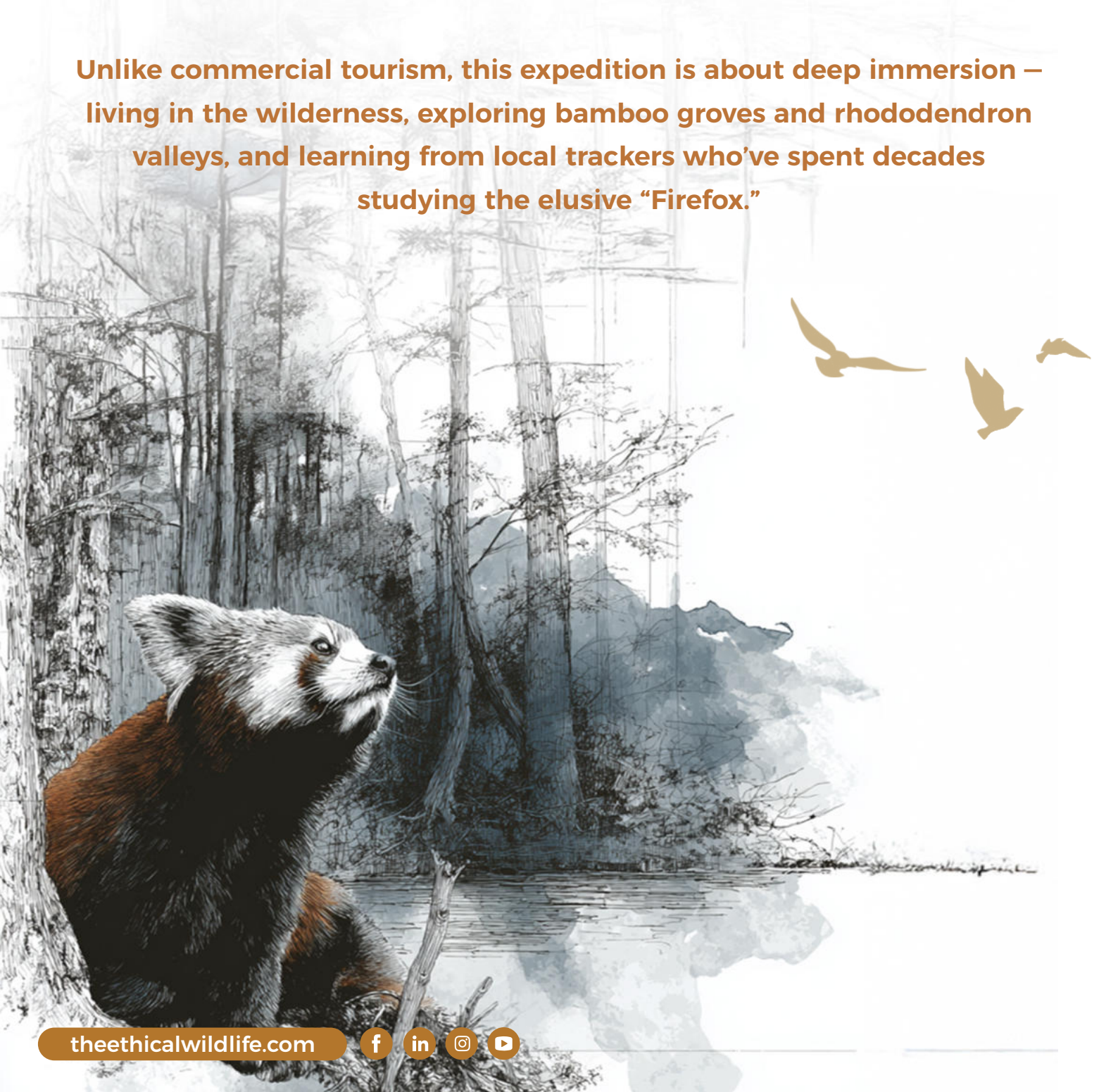
theethicalwildlife.com





This Red Panda Expedition is crafted for wildlife lovers, photographers, and adventurers eager to witness one of the world’s most enchanting mammals – The Red Panda – in its natural habitat. Located deep in the pristine forests of eastern Nepal, the Padma Sambhav Community Forest in Ilam, bordering the iconic Singalila National Park, offers unmatched biodiversity, breathtaking landscapes, and rich cultural encounters.

Unlike commercial tourism, this expedition is about deep immersion – living in the wilderness, exploring bamboo groves and rhododendron valleys, and learning from local trackers who’ve spent decades studying the elusive “Firefox.”

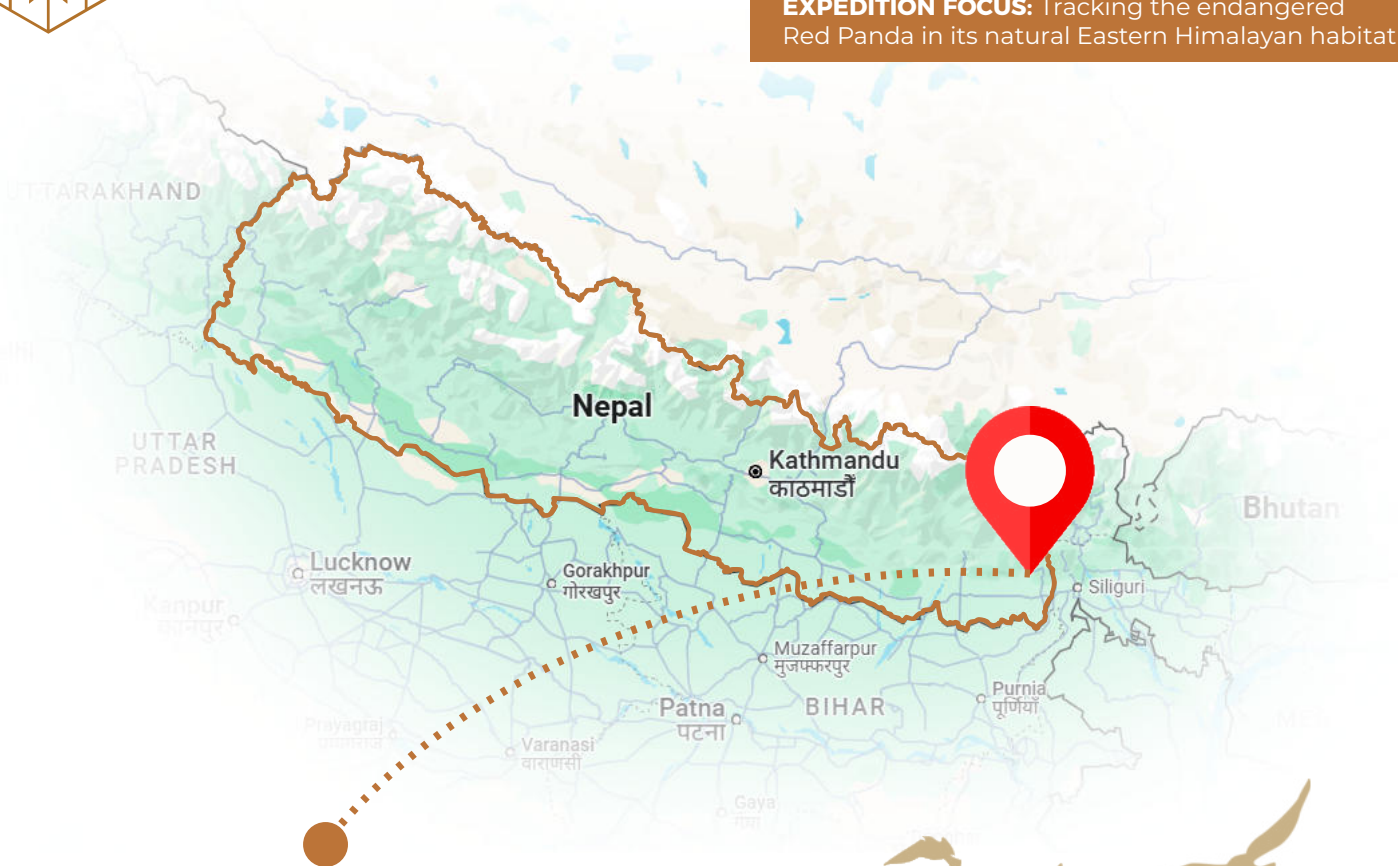




LENGTH : 6 DAYS / 5 NIGHTS

EXPEDITION BASE: SINGALILA NATIONAL PARK

EXPEDITION FOCUS: Tracking the endangered Red Panda in its natural Eastern Himalayan habitat



Location Advantage - Why Ilam?

Prime Habitat Access: Located at an altitude of 2,800–3,600 meters, our expedition base lies directly within the Red Panda's active territory.

Community-Driven Conservation: The forests are protected and managed by local communities, fostering both conservation and sustainable ecotourism.

Spectacular Biodiversity: Along with Red Pandas, the region supports Himalayan Black Bears, Clouded Leopards, various deer species, and over 120 bird species including Satyr Tragopans and Blood Pheasants.

Panoramic Beauty: Sandakphu, Nepal's highest accessible peak near our base, offers sunrise views of four of the five tallest mountains in the world — Everest, Kanchenjunga, Lhotse, and Makalu.

Day 1: Arrival in the Eastern Himalayas

Arrive at Bagdogra Airport by noon and meet your pickup for a scenic drive towards the Himalayan foothills. On arrival, check in to the community homestay and take time to rest and acclimatise after the journey. The day ends with an evening orientation followed by a relaxed dinner.



• ITINERARY •

Days 2–4: Red Panda Expedition & Sandakphu Sunset

Mornings begin unhurriedly alongside local trackers and naturalists, with dedicated Red Panda exploration walks winding through cool temperate forests. Along the way, you'll have opportunities to spot Himalayan birds, small mammals, and unique mountain flora—always with plenty of time to pause, observe, and photograph the forest at your own pace.

On Day 4, the highlight is a drive up to Sandakphu for a spectacular Himalayan sunset, followed by an overnight stay there, surrounded by sweeping panoramic mountain views.

• ITINERARY •

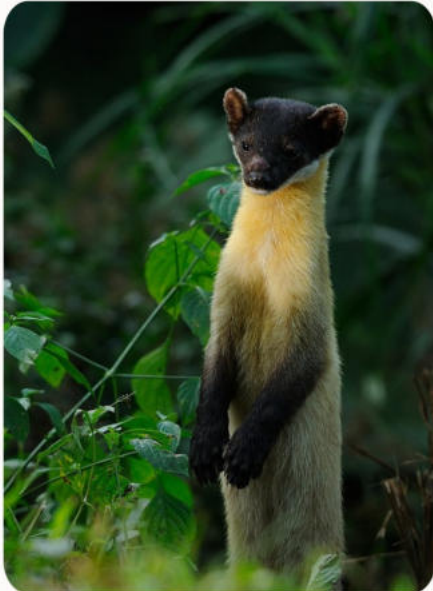
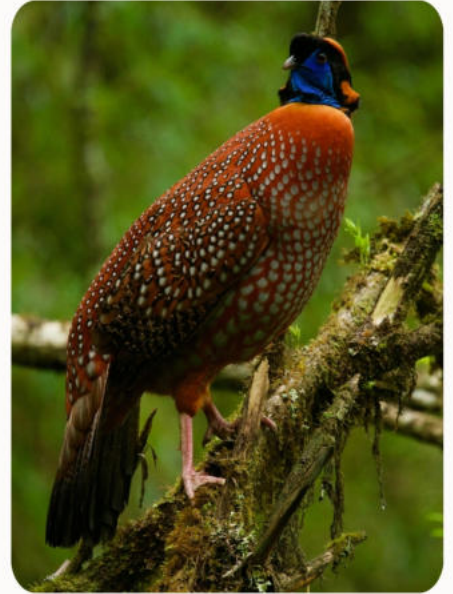
Day 5: Tea Trails of Fikkal

After breakfast, begin your descent from Sandakphu and enjoy a scenic drive to Fikkal, checking in at Sunshine Villa on arrival. Spend the afternoon at leisure amid rolling tea gardens, soaking in the calm surroundings. In the evening, settle in for a tea-tasting experience where you'll learn about local flavours, craft, and traditions.

Day 6: Departure

Enjoy an early breakfast at the homestay before driving back to Bagdogra Airport. Plan to depart by late morning.

GALLERY



● EXPEDITION STYLE ●

Accommodation: Remote wilderness base with eco-lodges or Village Homestays (comfortable but basic)

Pace: Moderate trekking involved (7-10 km daily); requires basic fitness

Team: Local guides, Red Panda trackers, English-speaking ground support, Photography mentor.

Group Size: Small, intimate group to reduce forest impact and improve sighting quality



● INCLUSIONS & EXCLUSIONS ●

Inclusions

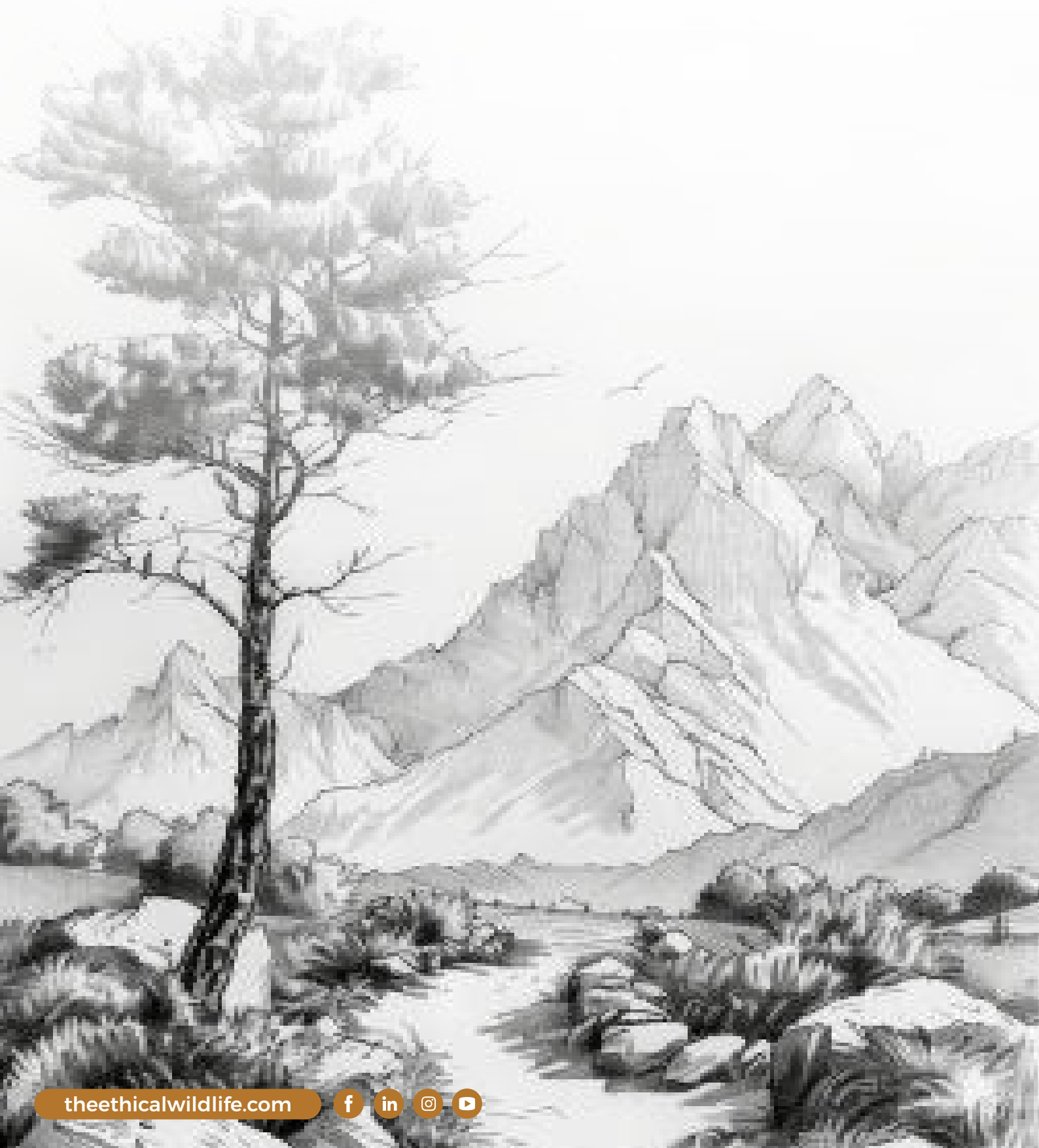
- 5 nights' accommodation in eco-lodges or Village Homestays
- Airport transfers from Bagdogra to Ilam (round trip) in Comfortable Vehicles
- All meals (Breakfast, Lunch, Dinner)
- Forest permits, camera fees, and community conservation fees
- 4WD transport within Nepal and to Sandakphu viewpoint

Exclusions

- Flight or train fare to/from Bagdogra
- Travel/medical insurance
- Tips and Gratuities
- Personal expenses (snacks, extra beverages)
- Personal Porters
- GST (taxes) and anything not specifically mentioned under Inclusions

• WHO IS THIS FOR? •

- Wildlife photographers and filmmakers
- Nature lovers and conservation enthusiasts
- Small travel groups seeking rare wildlife experiences
- Conscious travelers looking to support community-based tourism





CONTACT US



+91-8384090038, +91-9871775251



query@theethicalwildlife.com