



Golden Triangle **Tiger Safari** Expedition

9-DAYS WILDLIFE SAFARI EXPEDITION





Embark on the Golden Triangle Tiger expedition through India's most celebrated tiger habitats. Over nine immersive days and eight nights, you'll enjoy twelve thrilling safaris—seven in Bandhavgarh and five in Kanha—each offering rare encounters with wild tigers, lush forests, and vibrant birdlife. Led by an expert tour leader and wildlife photography mentor, this journey seamlessly blends adrenaline-charged game drives with luxurious lodgings and local cultural insights, making it perfect for nature enthusiasts, photographers, and conservation-minded travellers alike.



• ITINERARY •

Day 1 – Arrival in Delhi

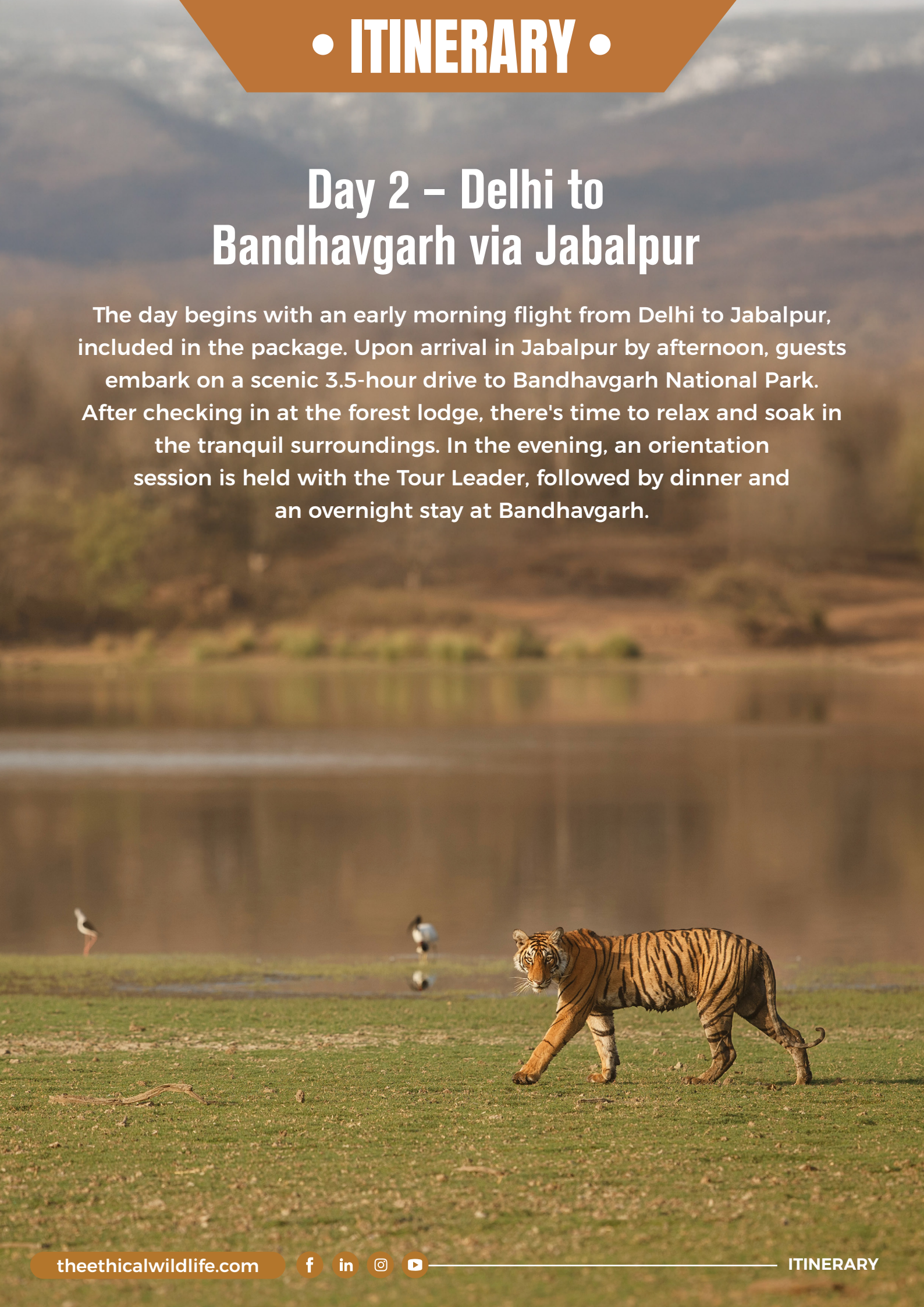
Upon arrival at Delhi Airport, guests are warmly received by our representative and transferred to the hotel for check-in. A late-night dinner is served, followed by an overnight stay in Delhi.



• ITINERARY •

Day 2 – Delhi to Bandhavgarh via Jabalpur

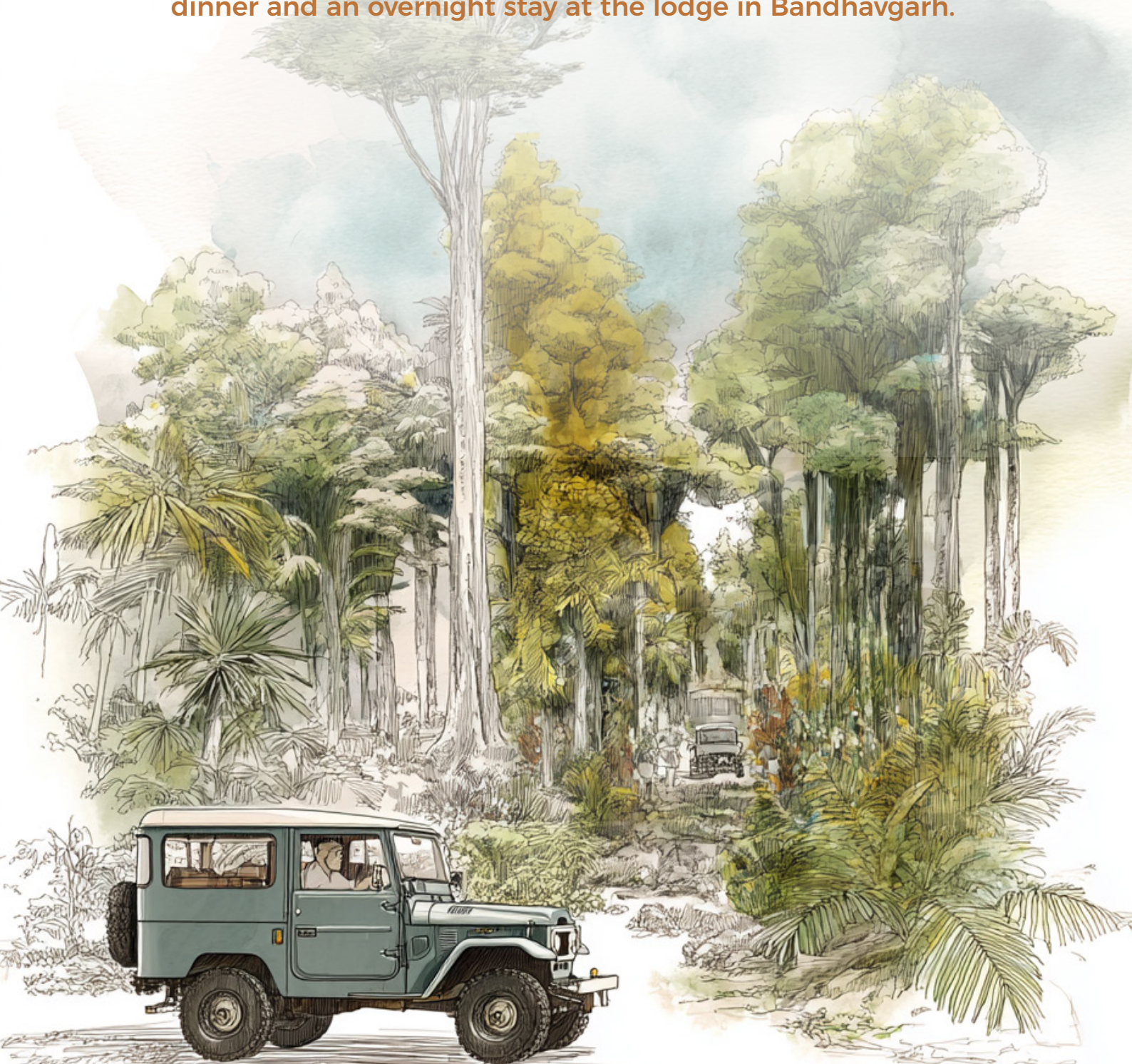
The day begins with an early morning flight from Delhi to Jabalpur, included in the package. Upon arrival in Jabalpur by afternoon, guests embark on a scenic 3.5-hour drive to Bandhavgarh National Park. After checking in at the forest lodge, there's time to relax and soak in the tranquil surroundings. In the evening, an orientation session is held with the Tour Leader, followed by dinner and an overnight stay at Bandhavgarh.



• ITINERARY •

Day 3 – Wildlife Immersion Begins

Guests wake up early and set off for their first jeep safari, exploring the wilderness of Bandhavgarh at dawn. After the safari, they return to the lodge for a hearty breakfast and some well-deserved rest. Post-lunch, the adventure resumes with an afternoon safari. The day ends with dinner and an overnight stay at the lodge in Bandhavgarh.



• ITINERARY •

Day 4 – Exploring Bandhavgarh

The day features a morning safari in one of Bandhavgarh's premium zones, offering excellent opportunities for wildlife sightings. After returning to the lodge for lunch, guests head out again for an evening safari. The day concludes with an overnight stay at the lodge in Bandhavgarh.



• ITINERARY •

Day 5 – Tiger Territory

Guests enjoy both morning and evening safaris in Bandhavgarh, a park renowned for having one of the highest tiger densities in India. All meals are served at the lodge, where guests also spend the night surrounded by the serene forest atmosphere.



• ITINERARY •

Day 6 – Drive to Kanha & Transition

The day begins with an early morning safari in Bandhavgarh, offering one last chance to experience its rich wildlife. After the safari, guests return to the lodge for breakfast and check-out. A scenic 5–6 hour drive through forested landscapes leads to Kanha, where guests check in at the jungle lodge. The evening is at leisure, allowing time to relax, enjoy a campfire, or simply soak in the peaceful forest ambience. Dinner is served at the lodge, followed by an overnight stay in Kanha.



Day 7 – Into Kanha's Heart

Guests embark on morning and afternoon safaris in different zones of Kanha, offering diverse wildlife experiences across the park.

The day is filled with opportunities to spot Kanha's rich biodiversity, including the rare Barasingha, Tigers, Leopards, Gaur, and more. An optional image review session or discussion with the photography guide is available for those interested. All meals are served at the lodge, where guests also spend the night.



• ITINERARY •

Day 8 – Into the Core

The day includes both morning and evening safaris, each offering unique zone experiences within Kanha's diverse landscapes. Wildlife sightings may include sloth bears, wild boars, raptors, and other fascinating species. After a day of exploration, guests return to the lodge for a relaxed evening, followed by dinner and an overnight stay.



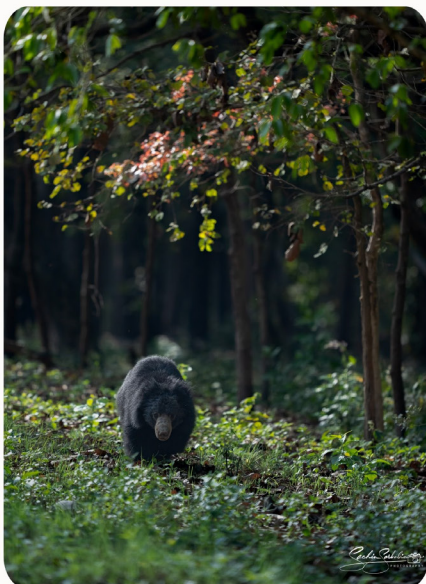
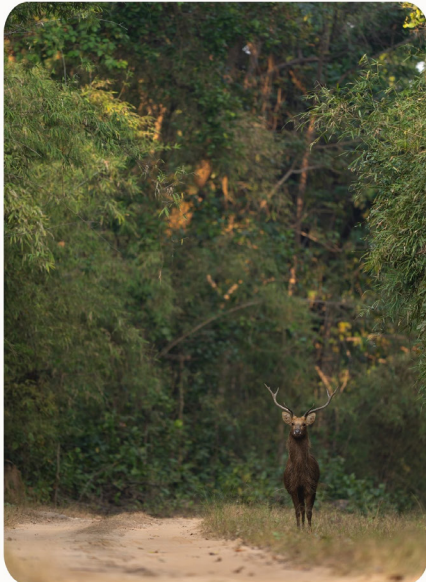
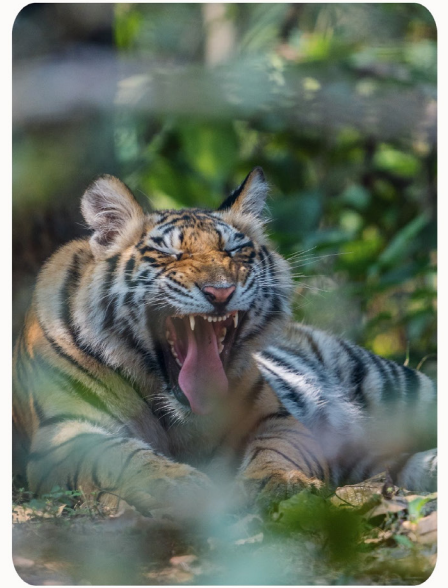
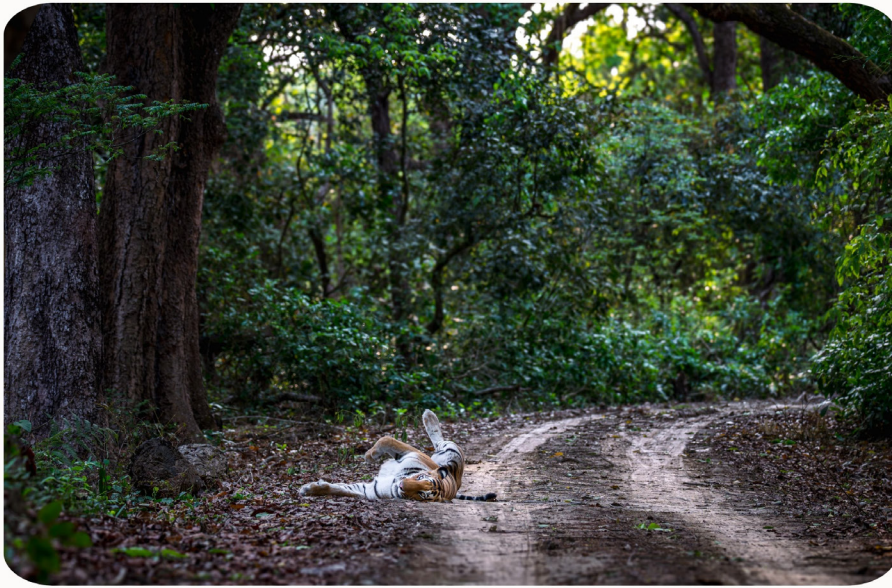
Day 9 – Final Safari Day & Departure

The final day begins with an early morning safari in Kanha, offering one last chance to witness the park's incredible wildlife. After the safari, guests return to the lodge for breakfast and check-out. They are then transferred to either Nagpur or Jabalpur Airport for their onward journey, marking the conclusion of the tour.

NOTE: Guests flying on Day 9 will depart as scheduled. For those with morning flights on Day 10, we've arranged an overnight stay in Delhi on the night of Day 9 to ensure a relaxed departure.



GALLERY



• INCLUSIONS & EXCLUSIONS •

Inclusions

- 8 nights' accommodation in eco-luxury lodges (Bandhavgarh & Kanha)
- All meals: Breakfast, Lunch, and Dinner
- 12 Jeep Safaris (Morning & Evening)
- National park permits, guide fees, and fixed zone entries
- All inter-park and airport transfers by private vehicles
- Return flight to Delhi included in the package
- Domestic flights: Delhi → Jabalpur and Nagpur/Jabalpur → Delhi
- Services of expert naturalist or photography guide (if requested)
- Drinking water and refreshments during safaris
- Photography mentorship and daily review sessions

Exclusions

- Alcoholic beverages, tips, laundry, and personal expenses
- Travel insurance
- Anything not mentioned under "Inclusions"



CONTACT US



+91-8384090038, +91-9871775251,
+91-7291817597



query@theethicalwildlife.com

theethicalwildlife.com

