



# Snow *Leopard* **Expedition** Ghost of the Mountains

10-DAY WILDLIFE SAFARI EXPEDITION



[theethicalwildlife.com](https://theethicalwildlife.com)







# Why Join This Expedition?

Venture into the heart of Ladakh's trans-Himalayan wilderness in search of the elusive Snow Leopard, the **"Ghost of the Mountains."** This handcrafted expedition blends comfort with adventure, offering intimate wildlife encounters, authentic Ladakhi culture, and inspiring landscapes – all under the guidance of experienced trackers and naturalists.



[theethicalwildlife.com](http://theethicalwildlife.com)







LENGTH : 10 DAYS / 9 NIGHTS



# Why Ladakh?

**Home of the Snow Leopard:** Track one of the world's most elusive predators in the wild, deep in Ladakh's snow-covered winter valleys.

**Raw Beauty & Real Adventure:** Trek across high-altitude deserts, cross frozen rivers in winter, or explore blooming alpine valleys and glacial lakes in summer.

**Live the Culture:** Stay with mountain communities, share butter tea, and witness ancient monastery rituals woven into daily life.

**High-Altitude Biodiversity:** Spot rare species like blue sheep, golden eagles, and Tibetan wolves in this fragile Himalayan ecosystem that thrives year-round.



# • ITINERARY •

## Day 1 – Arrival & Acclimatization

Upon arrival at Leh Airport (IXL), you will be transferred to The Grand Dragon Hotel. The rest of the day is reserved for complete rest, allowing you to acclimatize to Ladakh's high altitude, which is over 3,500 meters above sea level. In the evening, enjoy a warm welcome dinner followed by a detailed trip briefing.





# • ITINERARY •

## Days 2: Monasteries & Local Immersion

Depending on the guests' health and comfort, the day includes a guided visit to the iconic Hemis and Thiksey Monasteries, offering a glimpse into Ladakh's rich Tibetan-Buddhist heritage. The experience involves light walking and opportunities for cultural immersion, allowing guests to connect with the spiritual and historical essence of the region. The day concludes with an overnight stay at The Grand Dragon Hotel.





# • ITINERARY •

## Days 3–8: Snow Leopard Tracking

Guests will transfer to the lodge, a remote yet rustic-luxury base set deep in snow leopard territory, with a scenic drive of approximately three hours. Each day features wildlife excursions—early morning and afternoon outings led by experienced spotters and guides. The team scans the rugged ridgelines for elusive Snow Leopards, Blue Sheep, Himalayan Ibex, Ladakh Urial, Red Foxes, and Wolves, with expert trackers coordinating efforts using scopes and radios, backed by over a decade of field experience.

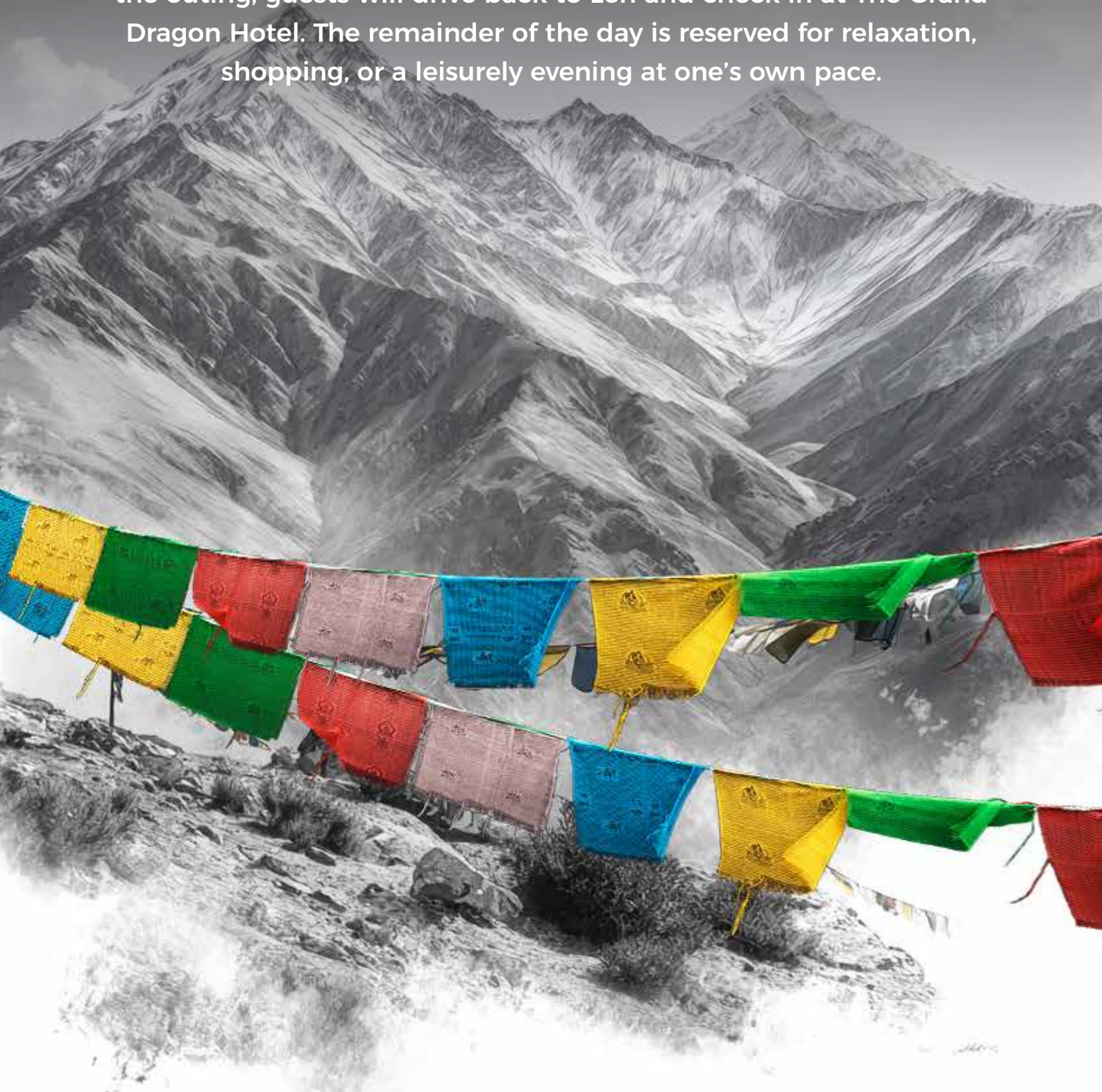
Alongside the wildlife experiences, guests can immerse themselves in local culture by visiting ancient 11th-century monasteries, engaging with villagers, and exploring the dramatic landscapes of the Mangyu Valley. For those seeking a more active adventure, optional full-day hikes





## Days 9: Return to Leh

The final morning begins with one last wildlife excursion, offering a chance to catch a final glimpse of the region's remarkable fauna. After the outing, guests will drive back to Leh and check in at The Grand Dragon Hotel. The remainder of the day is reserved for relaxation, shopping, or a leisurely evening at one's own pace.





# • ITINERARY •

## Days 10: Departure

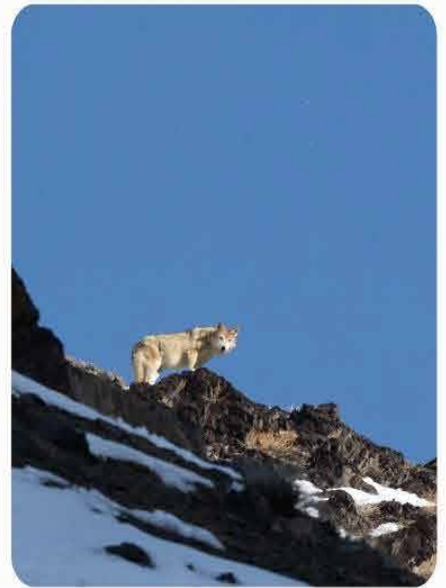
Transfer to Leh Airport with unforgettable memories and rare wildlife sightings





# GALLERY

---





# • Our Stay •

- Premium Traditional Ladakhi-style rooms with wooden stoves
- Private attached bathrooms with 24-hour hot water
- Community dining and lounge spaces heated by traditional methods
- In-house chef preparing Indian, Continental, and local Ladakhi meals
- 24/7 access to spotters and naturalists





# • INCLUSIONS & EXCLUSIONS •

## Inclusions

- 6 Nights in Ladakh and 3 Nights in Leh.
- All meals (Breakfast, Lunch, Dinner) with non-alcoholic beverages
- Toyota Crysta for all ground transportation as per itinerary
- Expert trackers and English-speaking naturalist
- Photography tips and guide, post processing sessions and discussions.
- Forest/wildlife permits and spotting scopes/binoculars (shared)
- Visit to local Ladakhi home with tea & barley wine experience
- Guided monastery visits and cultural interactions

## Exclusions

- Flights to/from Leh
- Alcoholic beverages (except complimentary local wine “Chang”)
- Laundry, additional excursions, personal expenses
- Insurance and emergency evacuation
- Gratuities for lodge staff, trackers, and drivers
- Personal gear (binoculars, clothing, scopes)
- GST & visa costs (if applicable)

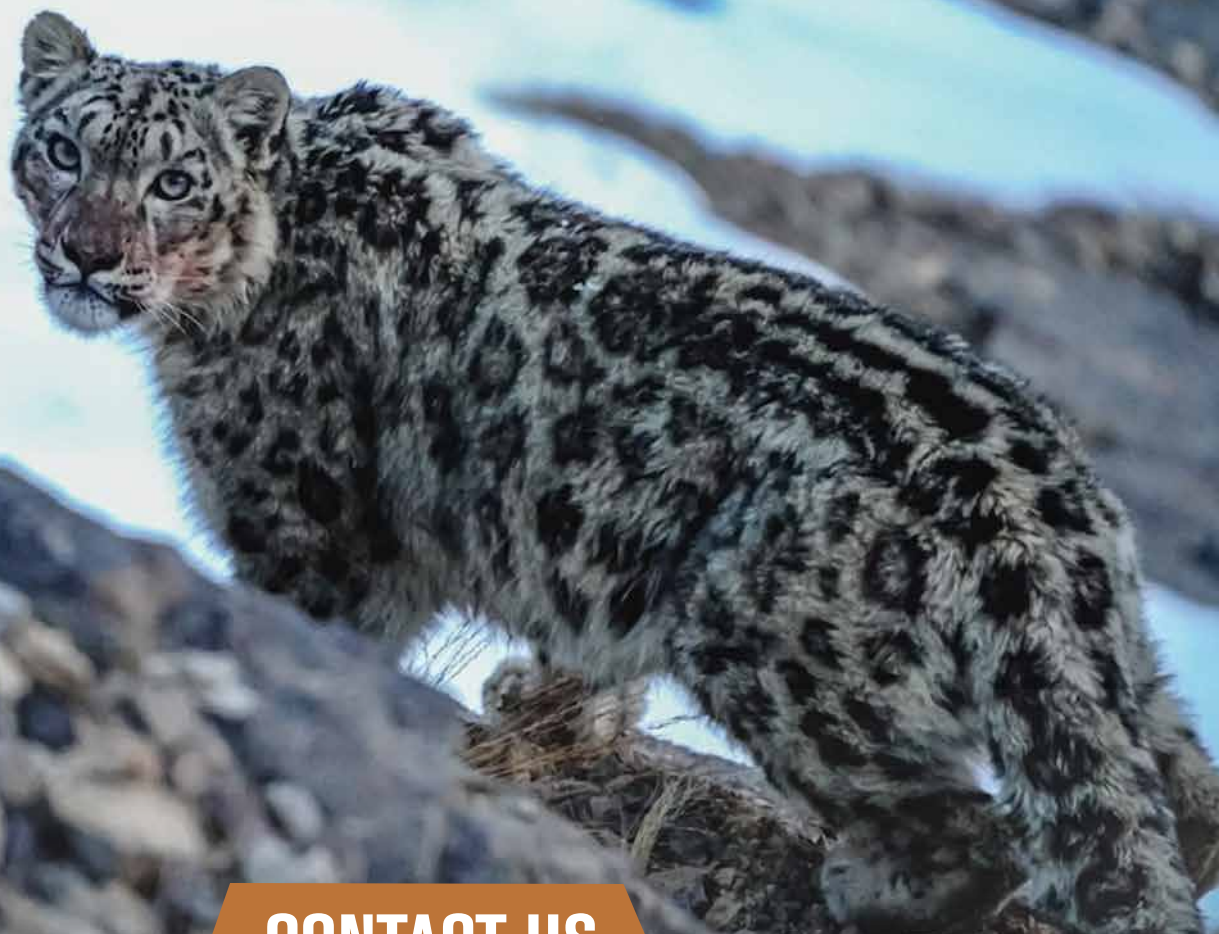


# • WHO SHOULD JOIN? •

- Wildlife photographers
- Nature lovers seeking rare species in remote landscapes
- Adventure travellers interested in authentic Himalayan culture
- Ethical travellers supporting sustainable, local tourism







## CONTACT US



+91-8384090038, +91-9871775251,  
+91-7291817597



[query@theethicalwildlife.com](mailto:query@theethicalwildlife.com)

[theethicalwildlife.com](http://theethicalwildlife.com)

